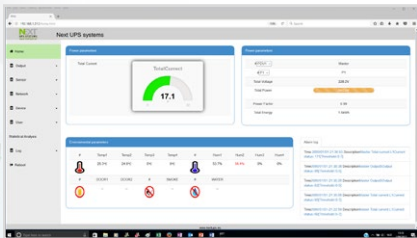


# NEXT iPDU (Intelligent PDU)



NEXT iPDU - IEC LOCK - Ref. NEXT : 88020

NEXT iPDU's (Power Distribution Units) enable advanced, user-customizable power control and active monitoring. Remote outlet level controls allow power on/off functionality for power cycling to remotely reboot equipment and restrict unauthorized use of individual outlets. Power sequencing time delays allow users to define the order in which to power up or down attached equipment to avoid circuit overload. Current metering provides real-time remote monitoring of connected loads with user-defined alarms to warn of potential circuit overloads. Users can access, configure, and control iPDUs through secure Web, SNMP, Command Line Interface, or Telnet Interfaces. New NEXT iPDUs include real power monitoring, a temperature/humidity sensor port, and IEC-LOCK receptacles.



- Easy Configuration: includes central advanced LCD display with menu system (0U iPDU).
- Central Communication and Alerts: Read Current, Voltage, Power, kWhr and more, Interface allows easy identification of alerts. Easily monitor the status of your power distribution on the LCD (0U iPDU), via the web interface or via your management software.
- iPDUs are available in 0U to fit vertically on the back of a rack, or in 1U to be mounted horizontally in any server rack.
- Ensure the iPDU, plugs and cables are completely out of the way of equipment with button mount on the rear and sides.
- Choose to raise or lower the iPDU in the rack to suit your installation
- Active monitoring per outlet
- NEXT iPDUs have a large number of sockets :
  - 8 IEC-LOCK C13 (1U iPDU) which fit into a very compact unit (1U - 19")
  - 12 IEC-LOCK C13 & 4 IEC-LOCK C19 (0U iPDU)
- NEXT iPDUs are easy to implement into any type of installation: they can be rack mounted horizontally (1U) or vertically (0U)
- Integrated IEC-LOCK Plug Retention: Prevents accidental disconnection from being bumped or from vibration (IEC version only).



## Technical specifications iPDU

MODEL	NEXT iPDU 1U (Horizontal)	NEXT iPDU 0U (Vertical)
<b>PHYSICAL</b>		
Dimensions	445x485x220	1490x67x76
Mounting style	horizontally / under a surface	vertical only
<b>INSTALLATION</b>		
Format	1,5U (except BS) 19" rack-mounting with multi-position mountings	
<b>INPUT</b>		
Max kW	4	7.3
Plug	(1) IEC-320-C20	(1) IEC-309
Cable Length (m)	2	
Voltage	230V	
Current	16	32
Phase	Single Phase	
Frequency	50Hz	
<b>OUTPUT</b>		
Grip cable retention	Yes (IEC LOCK)	
<b>PROTECTION &amp; FILTERING</b>		
Spike/Surge Suppression	none	
EMI/RFI Filter	none	
<b>OUTLETS</b>		
IEC-320-C13	8	12
IEC-320-C19	-	4
Outlet Control	Yes	
<b>CONTROL &amp; INTERFACE</b>		
Daisy Chain	2 iPDU's 1U	5 iPDU's 0U
Operating Temperature	60°C	
Hot Swap Network & Control	-	yes
Communication & Protocols	HTTP, SSL, Telnet, FTP, SNMP, SMTP, DNS, DHCP	
Optional Temperature and Humidity probe	Thermal SENSOR for iPDU	
Serial Interface	no	yes
Environmental Interface	yes	
Ethernet Interface	yes	
Voltage Monitoring	yes	
<b>METERING AND SWITCHING</b>		
Metering Characteristics	V, W, A and kWhr, Active power, Apparent Power, Peak Power	
Metering Accuracy	± 1%	
Circuit breaker status monitoring	yes	
Switching	Outlet and Equipment Switching	
<b>WARRANTY</b>		
Standard Warranty	2 years	
<b>NEXT PARTNUMBERS</b>		
NEXT iPDU	88020	88021
NEXT iPDU Thermal Sensor	88022	

Product specifications are subject to change without further notice

NEXT iPDU - IEC LOCK - Ref. NEXT : 88021