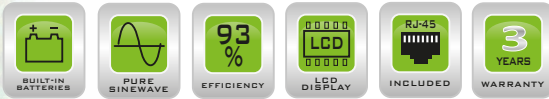


LOGIX II TOWER NETPACK



SNMP WEB Interface II included



• True double-conversion online UPS

A true double conversion UPS will provide clean, high level quality power to fully protect mission-critical devices such as sensitive networks, small computer centers, servers, telecom applications, as well as for industrial applications.

• Output power factor 0.9

Compared to the online UPSs in the current market, Logix series provides better output power factor up to 0.9. It offers higher performance and efficiency for critical applications.

• USB HID

Getting tired of installing monitoring software for UPS ? With our UPS featured USB port which supports HID (Human Interface Device) Power Device Class, no more software installation is needed.

Computer's Operating systems such as Windows/Linux/MAC OS comes with an embedded power management and monitoring function. When such computer connects to a UPS with this feature, the UPS will be automatically recognized by the OS as a "HID UPS Battery".

UPSs with this feature is also ideal as a back-up power for NAS (Network Attached Storage).

• 50/60 Hz Frequency Converter Mode

Lock output frequency at 50Hz or 60Hz to suit power sensitive equipments.

• ECO mode operation for energy saving

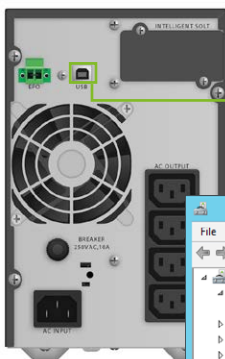
Offers efficiency as high as 97% to cut energy usage & cost. UPS power application via static bypass, timely returning to online double conversion when the need arises.

• Emergency Power Off (EPO) Function

This feature can secure the personnel and equipment in case of fires or other emergencies.

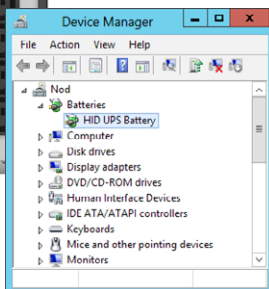
• Wide input voltage range (110 V -300 V)

Logix can still provide stable power to connected devices under unstable power environments.



Logix II Tower 1000 NP

HID UPS Battery supported USB Port



LCD Display Panel

Logix II Tower Netpack Online UPS Selection Guide

MODEL	LOGIX II 1000 TOWER NETPACK	LOGIX II 2000 TOWER NETPACK	LOGIX II 3000 TOWER NETPACK	
TYPE	Online UPS			
CAPACITY	1000 VA/900 W	2000 VA/1800 W	3000 VA/2700 W	
OUTPUT POWER FACTOR	0.90			
INPUT				
Input Voltage Range	176-300 VAC or 80x285 VAC in bypass mode			
Max THDi	<5%			
Input PF	≥ 0.99 at full load			
Frequency Range	40 Hz ~ 70 Hz			
Frequency (Synchronized Range)	45Hz - 55Hz or 54Hz - 66Hz			
OUTPUT				
Nominal Output Voltage	220/230/240 VAC			
Pure Sine Wave	yes			
THDv	≤2% Full Linear Load; ≤5% Non-Linear Load			
Voltage Regulation (Bat. Mod.)	±2%			
Frequency Reg. (Battery Mode)	±0,05Hz			
TECHNICAL DETAILS				
Load Crest Ratio	03:01			
Transfer Time [AC to Battery]	0 ms			
Transfer Time [Inverter to Bypass]	4 ms			
Generator support	yes			
Overload Capacity	Line: constant @100%-105%; 1min @105%-130%; 10s @130%-150%; 300ms @>150%; bypass at higher; BAT: 10s @100%-150%; cut-off at higher			
External Battery Connection	yes			
Charger	1.5A			
Fan Logic	Always ON : Low speed: bypass/ECO or line mode with load below 70% High speed: Battery mode or line mode with load above 70%			
EFFICIENCY				
LINE mode full Load	89%	90%		
BATTERIES & AUTONOMY TIME				
Standard Model	Battery Type	2x 12V/9Ah	4x 12V/9Ah	6x 12V/9Ah
	Numbers	2	4	6
	DC Voltage	2 x 12V	4 x 12V	6 x 12V
	Recharge Time	4h to 90%	4h to 90%	4h to 90%
	Full Load Backup Time	3.7 min	3.8 min	3.9 min
Half Load Backup Time	10.5 min	11.0 min	11.7 min	
CONNECTIONS & COMMUNICATION				
IEC C13 Outlet	4			
IEC C19 Outlet	-	-	1	
Input	Winpower			
Software	Yes			
USB port	Yes			
HID Support	Yes			
RS-232 Port	Yes, 1			
Extension Slot	Yes			
EPO Port	Yes			
PHYSICAL - LOGISTICS				
Package Content	UPS, Manual, USB Cable, Input Power Cable, 2x IEC Cable, SNMP/PWEB Interface			
Manual Languages	EN			
EAN	5420067301912	5420067301967	5420067301974	
Width	144 mm		190 mm	
Height	229 mm		328 mm	
Depth	356 mm		399 mm	
Weight	9.3 kg	17.2 kg	22.2 kg	
BOX - Width	240 mm		324 mm	
BOX - Height	330 mm		464 mm	
BOX - Depth	436 mm		500 mm	
BOX - Weight	11 kg	20 kg	26 kg	
Pcs. per box		1		
Pcs. per pallet	30	14	14	
NEXT PART NUMBERS				
LOGIX II Tower NETPACK	77155	77156	77157	
LOGIX II Tower EXB	66011	66012	66013	
NEXT 5+ Warranty Extension (UPS)	11004		11006	
NEXT 5+ Warranty Extension (EXB)	11012	11014	11016	

Product specifications are subject to change without further notice

Logix II Tower Netpack Battery Pack

Capacity (VA)	1000VA	2000VA	3000VA
Battery Type	12 V 9 Ah	12 V 9 Ah	12 V 9 Ah
# Batteries	4 pcs	8 pcs	12 pcs
Dimension (DxWxH) mm	345 X 144 X 229 393 X 190 X 330		
Net Weight (kgs)	12.5	25.4	36.2

Product specifications are subject to change without further notice

