

Integrated Power Management for Microsoft Windows 7, Vista, and Windows server 2008, 2012 (x86&x64)

(USB UPS Communication)

User
documentation



Acknowledgements And Intellectual Property

NEXT UPS Systems WOULD LIKE TO THANK MICROSOFT CORP. FOR INTEGRATING THE SUPPORT OF POWER DEVICE CLASS / USB ENABLED UPS'S IN MICROSOFT WINDOWS POWER MANAGEMENT.

ALL SCREENSHOTS, AND INFORMATION ABOUT INTEGRATED POWER MANAGEMENT OF WINDOWS VISTA, 7, 2008™ ARE THE SOLE PROPERTY OF MICROSOFT CORP.

ALL PRODUCT NAMES ARE TRADEMARKS, REGISTERED TRADEMARKS, OR SERVICE MARKS OF THEIR RESPECTIVE OWNERS.

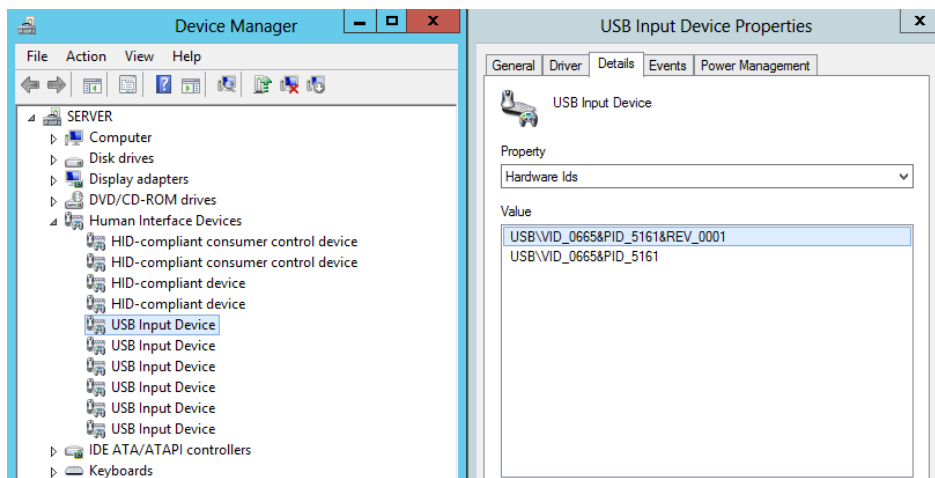
Introduction

This documentation applies to all computers running one of these operating systems : Microsoft Windows 7, 2008, Vista. These computers can be either Home PCs, servers, ... In the user documentation we will use « computer » as a generic term. Using Integrated Power Management you have no software to install and the UPS is automatically recognized.

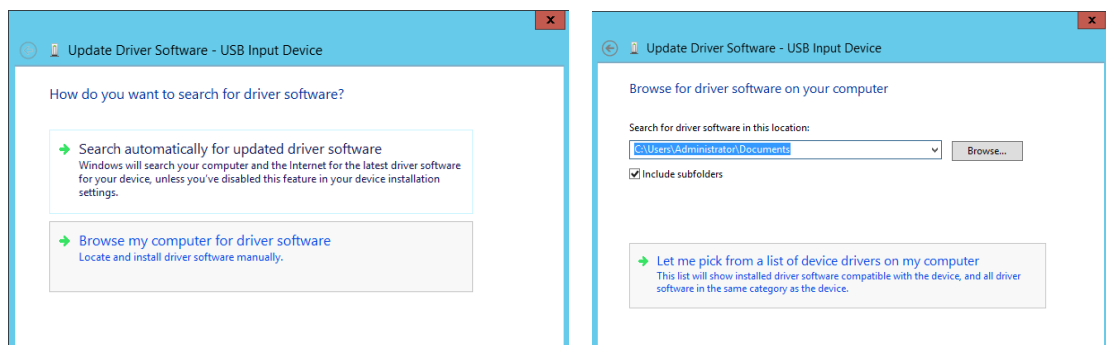
UPS Detection and Driver Installation

Download the correct driver package (x64 or x86) from <http://www.nextups.eu/software/item/windowshidusbdriver> and unzip them in a temp folder on your system.

When the NEXT UPS Systems UPS is connected to the computer using the USB cable, the new device should be automatically displayed in the Device Manager as a "USB Input Device" with VID_0665&PID_5161.

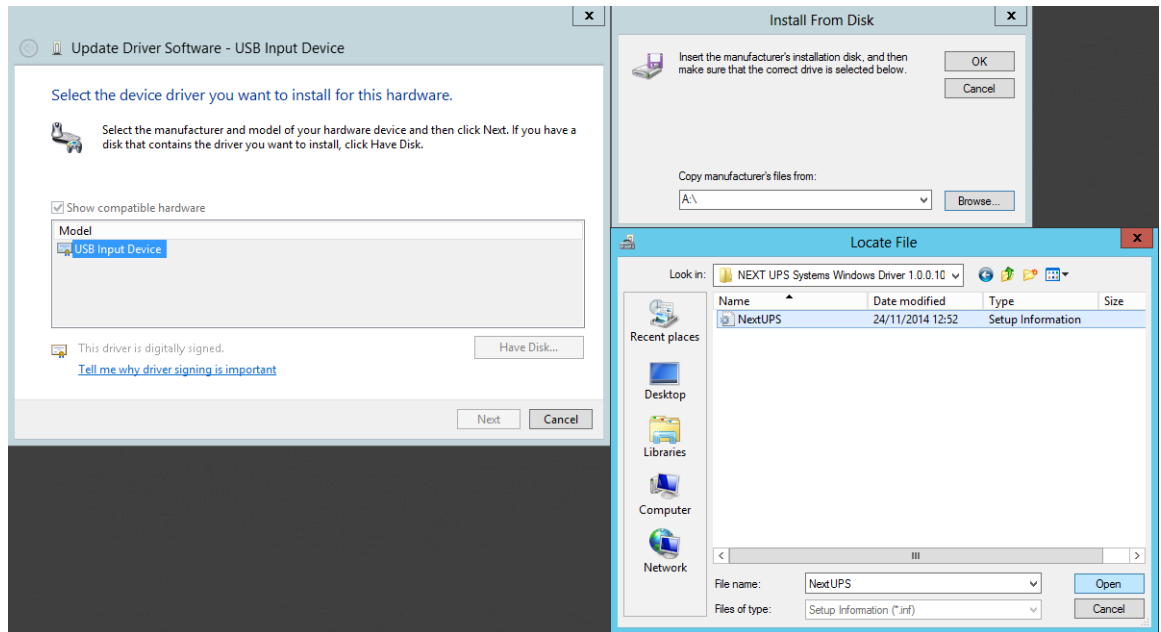


Right click on the 'USB Input Device' and select 'Update Driver Software...'. Select 'Browse my computer for driver software'. On the following display Select 'Let me pick from a list...':

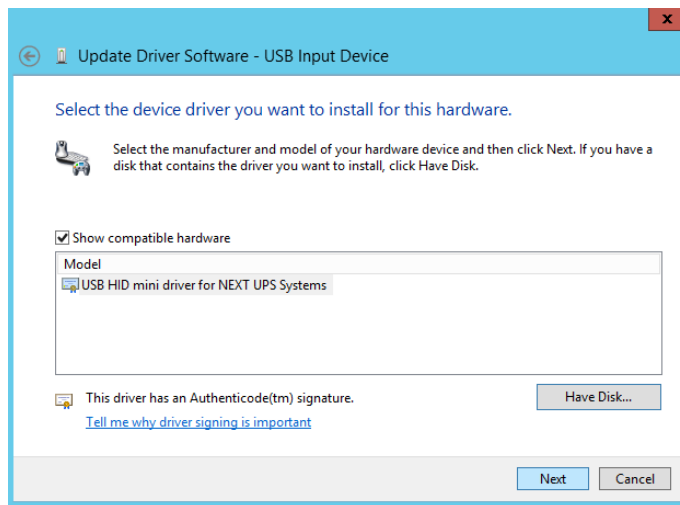


Now Select 'Have Disk' and Browse for the folder containing the unpacked driver files.

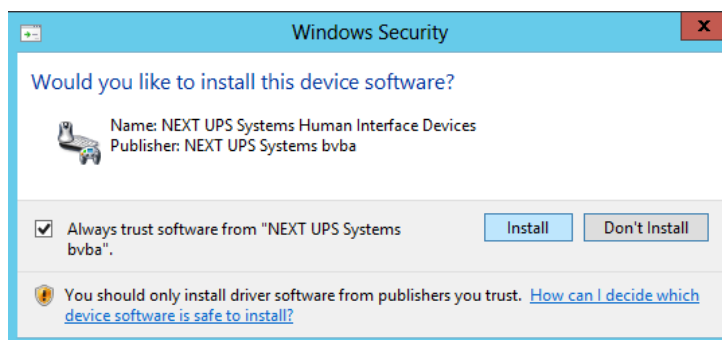
Open the NextUPS.inf file, click OK to confirm:



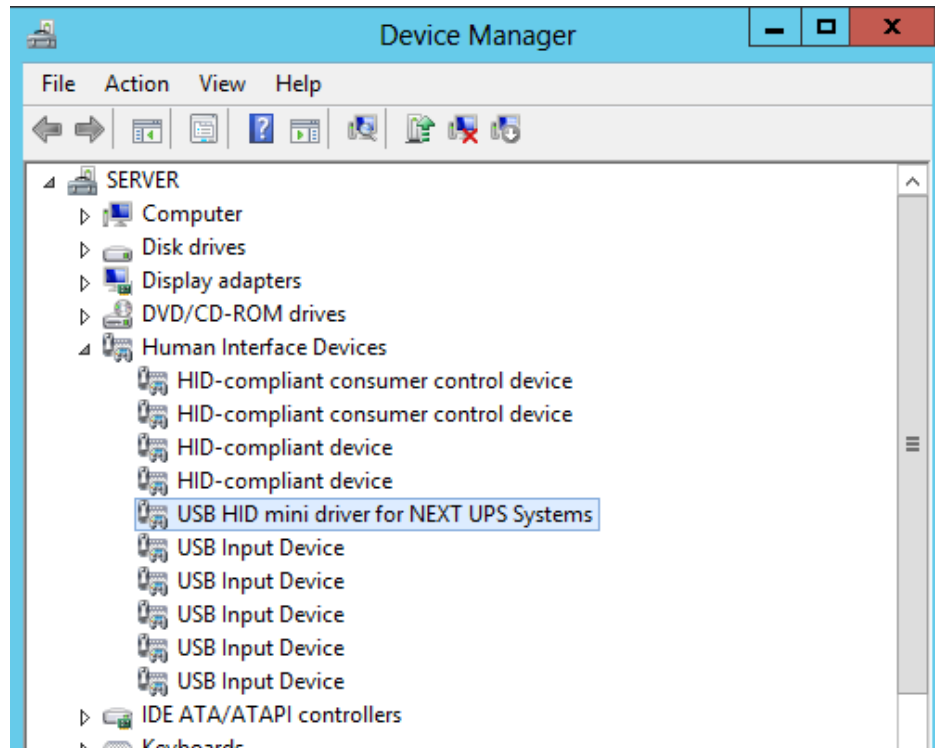
The 'USB HID mini driver for NEXT UPS Systems' should appear in the compatible hardware list. Click 'Next'



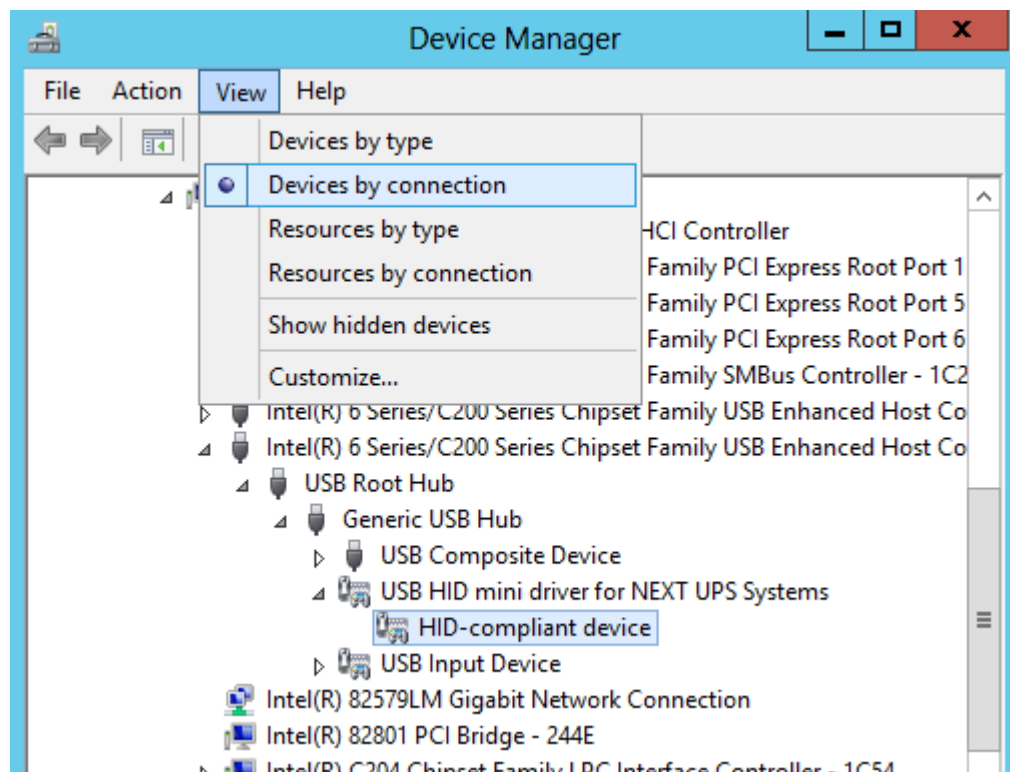
A Windows security windows pops up to install the signing certificate for this driver. Click the select box and 'Install' to confirm.



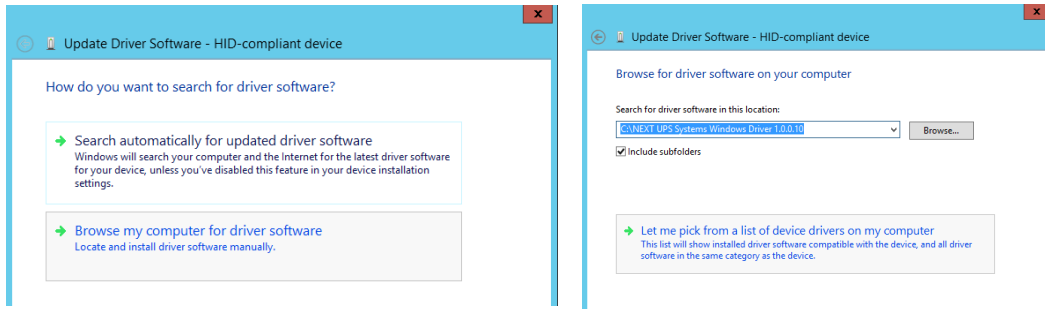
The 'USB HID mini driver for NEXT UPS Systems' appears in the device manager.



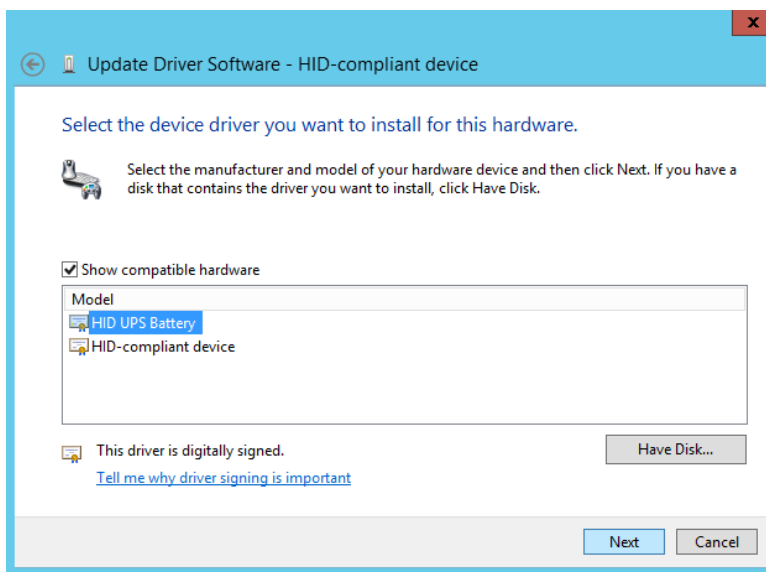
Change to View - Devices by connection and select the 'HID-compliant device' under the 'USB HID mini driver for NEXT UPS Systems'



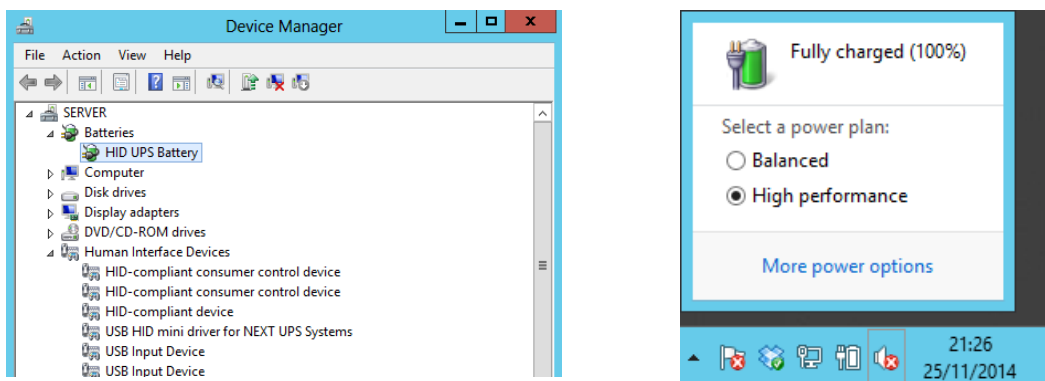
Right Click on the 'HID-compliant device' and select 'Update driver software...'
Select 'Browse my computer for software' and then 'Let me pick from a list of devices on my computer'



Select the 'HID UPS Battery' from the list and click 'Next'



A 'HID UPS Battery' appears in the Device Manager and a systray battery icon in the taskbar:



Recommended settings:

Introduction:

We would advise you to customize the shutdown threshold and the notification threshold. The default values are optimized for laptop batteries and you have to change these values to benefit from UPS features.

With these settings, you should be able:

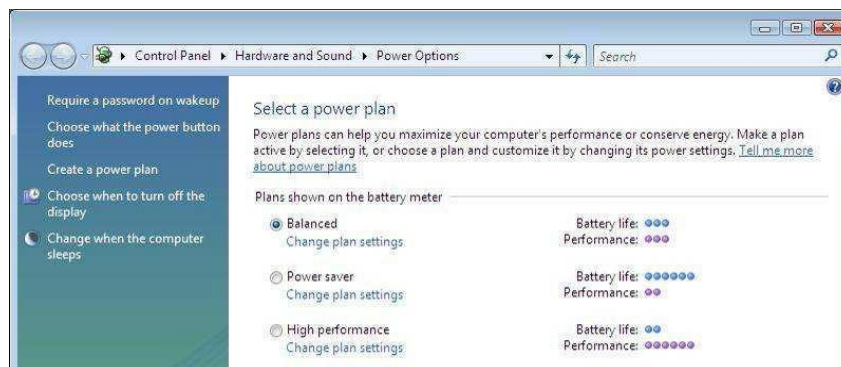
- ÿ to define the shutdown of your computer during a utility failure. i.e. shutdown when the battery charge level passes under the selected threshold. This threshold will be defined to ensure enough autonomy duration in order to completely and properly shutdown your computer. (We advise 30%)
- ÿ to be warned when the battery is low (We advise 50%)

Configuration steps:

To perform these settings, please follow these steps:

- ÿ From the Battery Icon on Systray, perform a “right click” and select “Power Options”. Following window appear:

ÿ



- ÿ Select for example the “Balanced plan” and click on “Change plan settings” Following window appear:

ÿ



- ÿ In the above window, click on “Change advanced power settings”
From the “Advanced settings” Tab, expand “Battery” parameters and change the settings as recommended.



Settings values:

For a correct shutdown sequence we recommend following settings:

- ÿ Critical battery action -> On battery : (choose **Hibernate** or **Shut down**)
- ÿ Low battery level -> On battery : **50 %**
- ÿ Critical battery level -> On battery : **30 %**
- ÿ Low battery notification -> On battery : **On**
- ÿ Low battery action -> On battery : **Do nothing**

Known Limitations In The Shutdown Sequence:

- ÿ Computer “automatic startup” function is not implemented in this generic driver.
After the shutdown caused by a long utility failure and when utility is back, the computer does not restart automatically.
- ÿ Should you need additional features, you can install “NEXTVision” on your computer
(Free download at <http://www.nextups.eu/software/item/nextvision>)